

Document No.: Internet/System Evidence Eraser Help Document

# Internet/System Evidence Eraser

MyWindowsDoctor Corp.

<http://www.mywindowsdoctor.com>

### Pages Order

<b>Getting Started</b> .....	Pages 3-11
<b>Using Internet/System Evidence Eraser</b> .....	Pages 12-16
<b>Company Information</b> .....	Pages 17
<b>How to Buy</b> .....	Pages 18-19
<b>Terms</b> .....	Pages 20-21

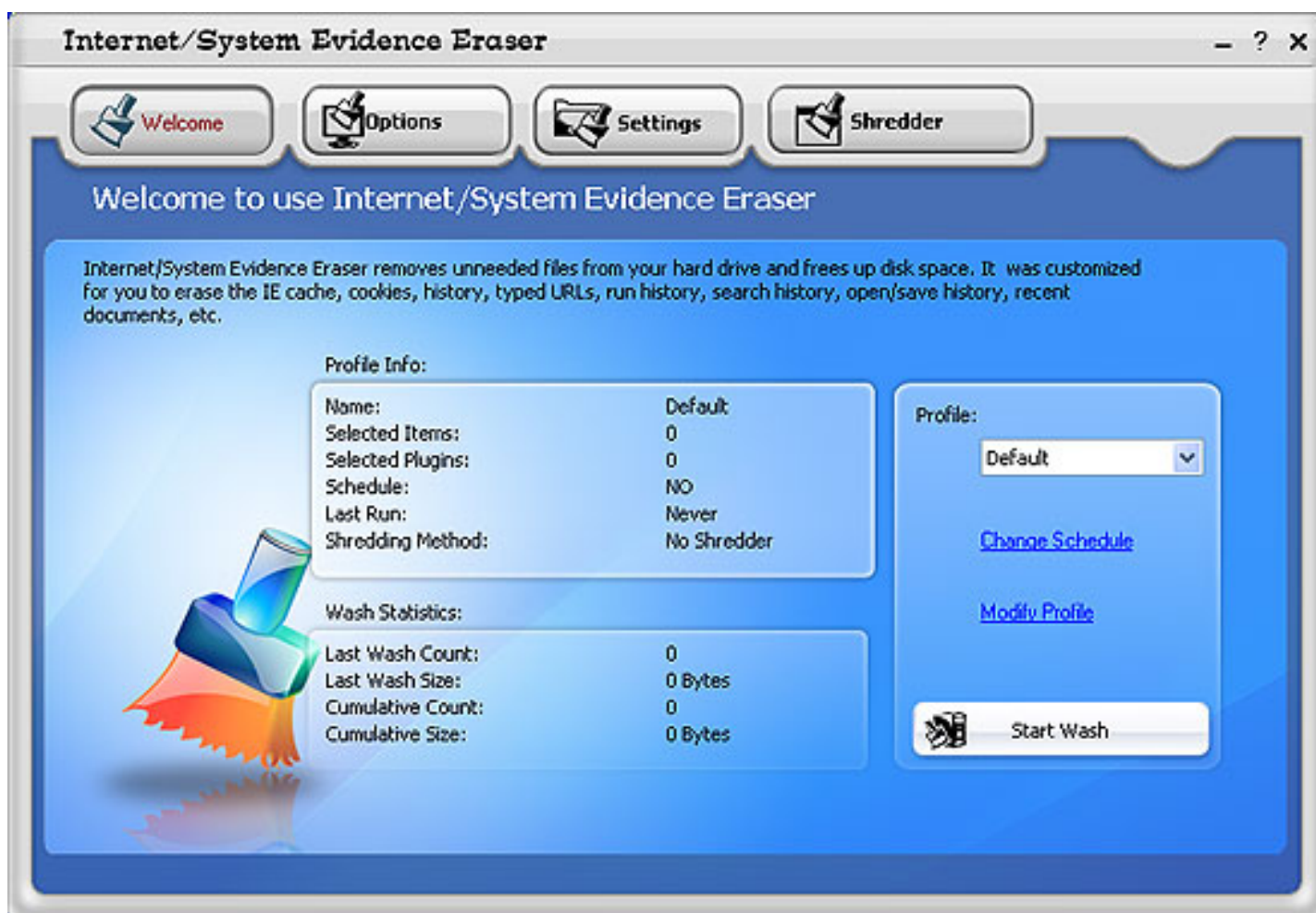
# Internet/System Evidence Eraser

## Introduction

### Introduction

Every time you browse the Internet, your own computer records your activities with programs such as Internet Explorer, AOL, and Netscape.

Internet/System Evidence Eraser eliminates the traces left on your computer. It erases data by using government-level removal techniques and completely "cleans" your computer of any Internet/Windows activity. It is the best evidence eliminator available to help keep your web surfing private! If you're a business person who doesn't want colleagues to know what Web sites you've visited, a student who doesn't want others to know which Internet files you've opened or a home user who wants to keep your history of files, videos, and music private, Internet/System Evidence Eraser provides the tools you need.



### Features Overview

Protect your Privacy, keep your Web Surfing private.

Completely clean all traces of online Internet activities on your computer including cache, cookies and history.

Permanently delete recycle bin contents, temporary files, document history, plus PC tracks.

Erase MS Office or Outlook Express.

Bleach free space and deleted files using Department of Defense standard (DoD 5220.22-M) or make them unrecoverable using regular methods.

Plug-ins to clean the history of 100+ third-party programs, including chat, image viewing, P2P applications and more.

Supports Internet Explorer, Netscape, Mozilla Firefox America Online and Instant Messages.

Free up space on your Hard Drive.

Speed up your computer.

And much more!

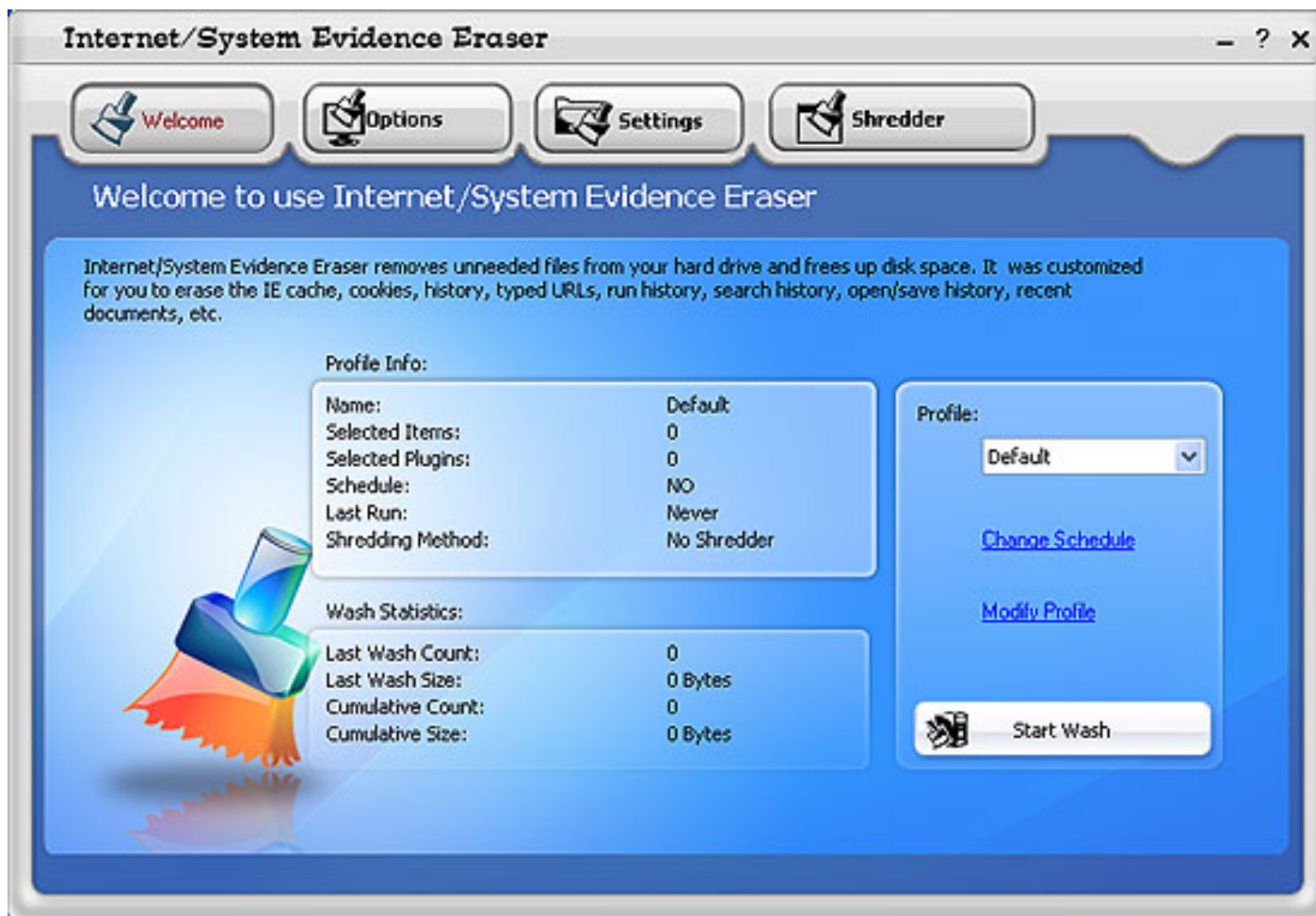
# Internet/System Evidence Eraser

## Quick Start

### Quick Start

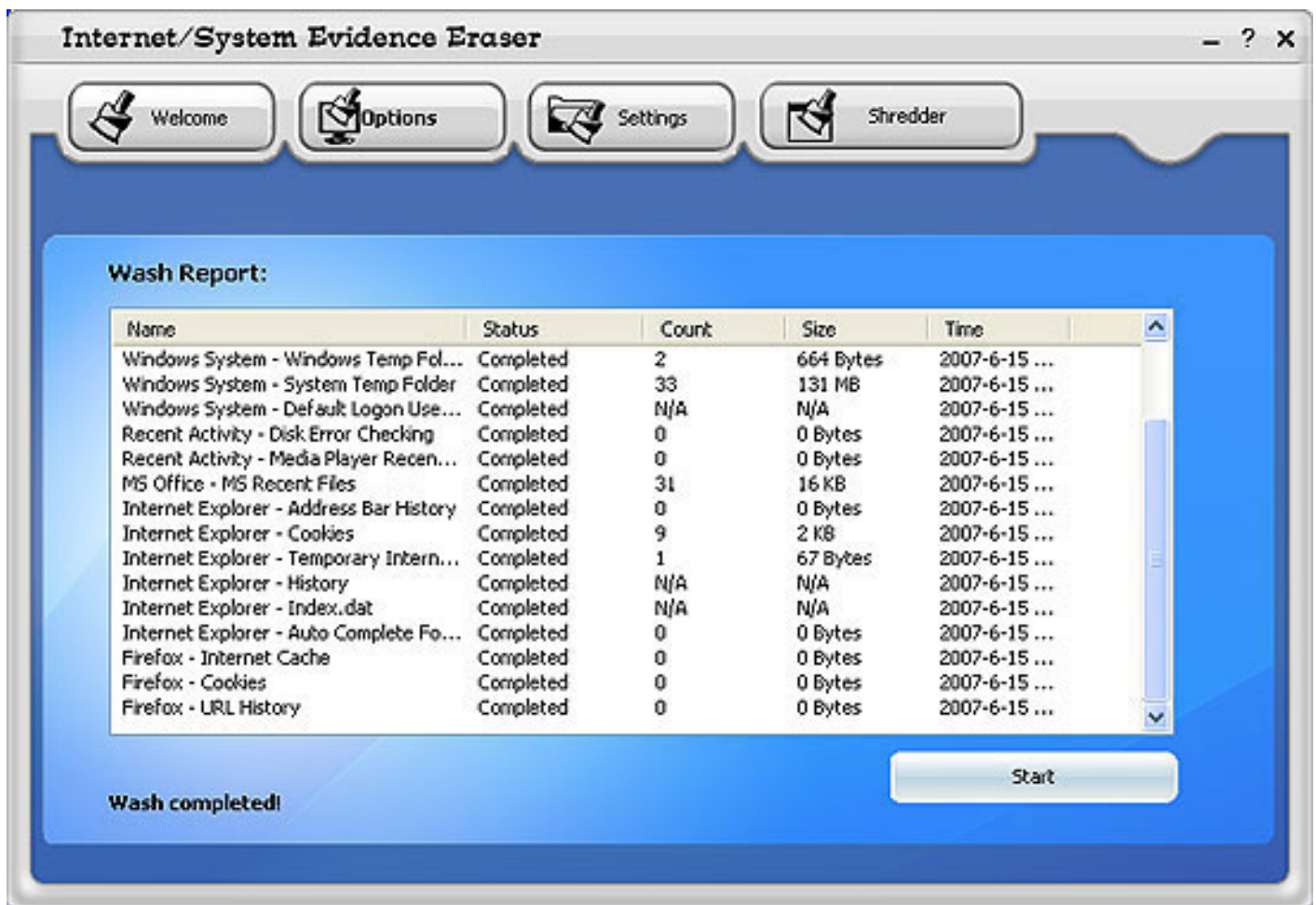
Learn to delete Internet and computer activities here:

1. When the program is started, the System Overview screen appears.



2. Click  in the System Overview Screen to add Profiles and set Profile Automation.

3. The Setting tab allows you to select which items to delete. To configure settings, check the corresponding boxes. By default, Internet/System Evidence Eraser performs complete scans. Internet/System Evidence Eraser will start scanning for a short while (depending on how big your registry is), then you will see the following screen:

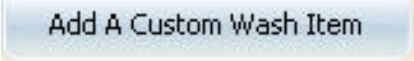


This window indicates that the washing task has been finished.

# Internet/System Evidence Eraser

## How to Add a Customer wash Item

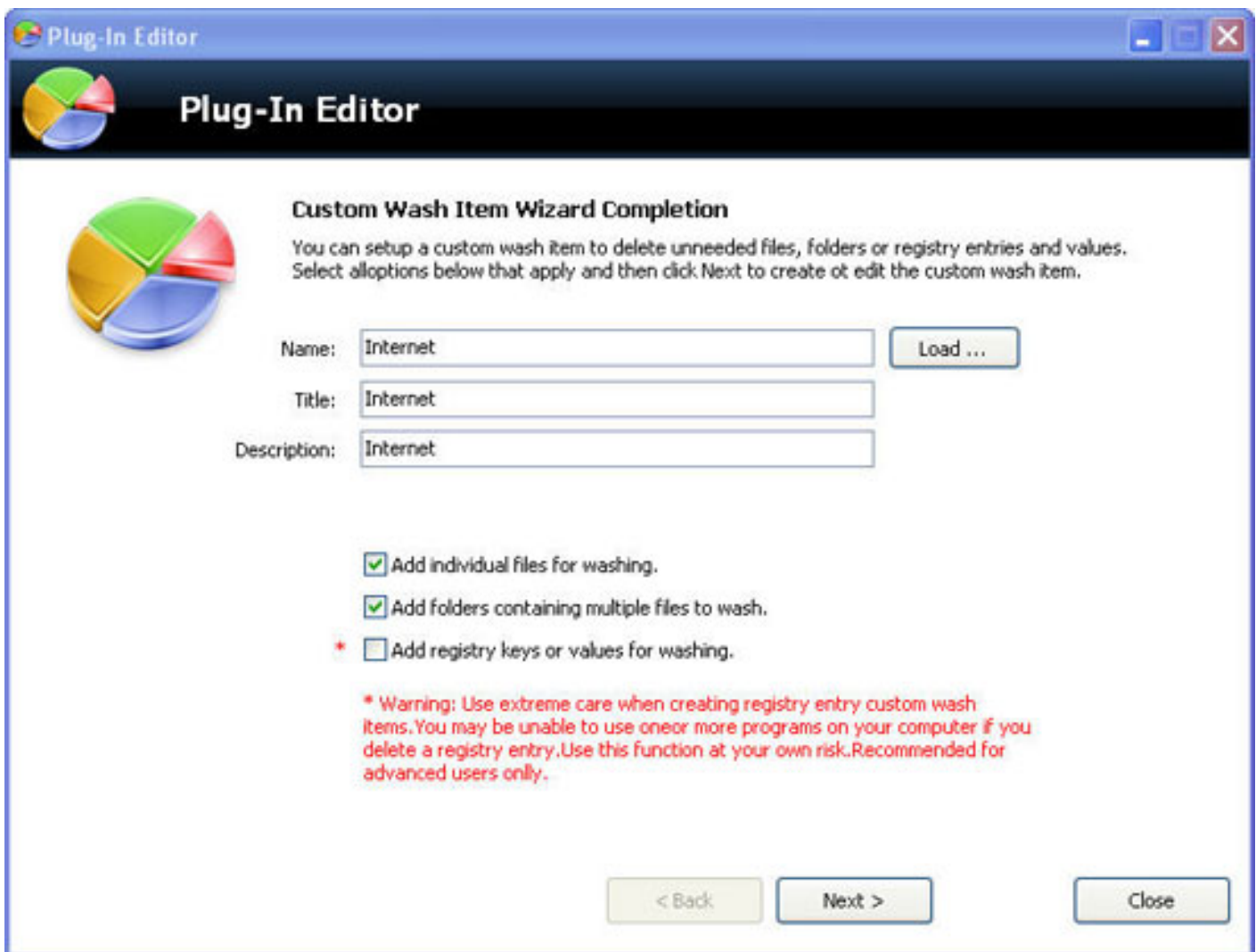
### How to Add a Customer wash Item

Click  to add wash items.

The following steps describe how to add a customer wash item:

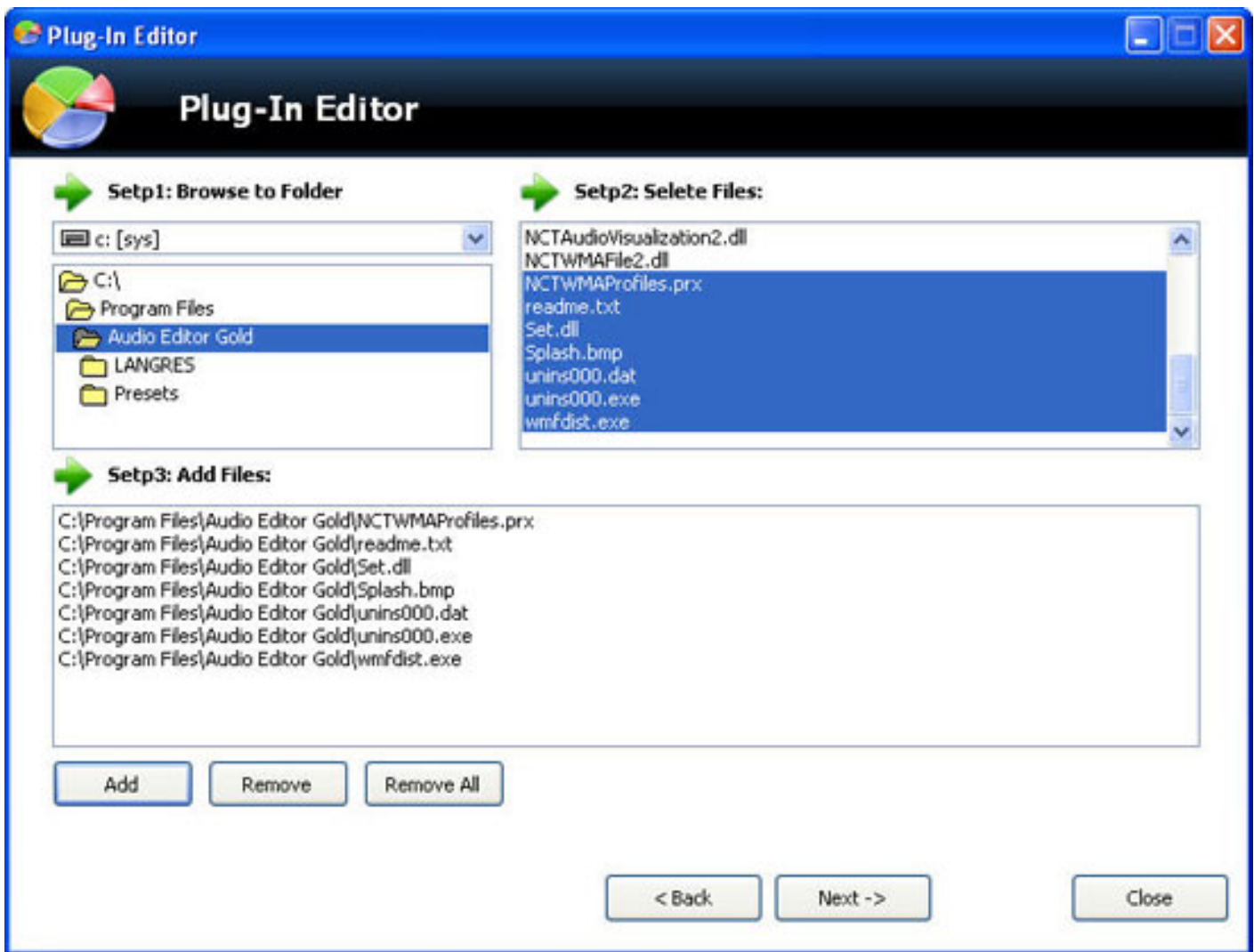
Step1: Click the the button "Add A Customer Wash Item"

Step2: Create a new Plug-in by typing Name, Title and Description, or open a Plug-in by clicking the "Load..." button and then "Next".



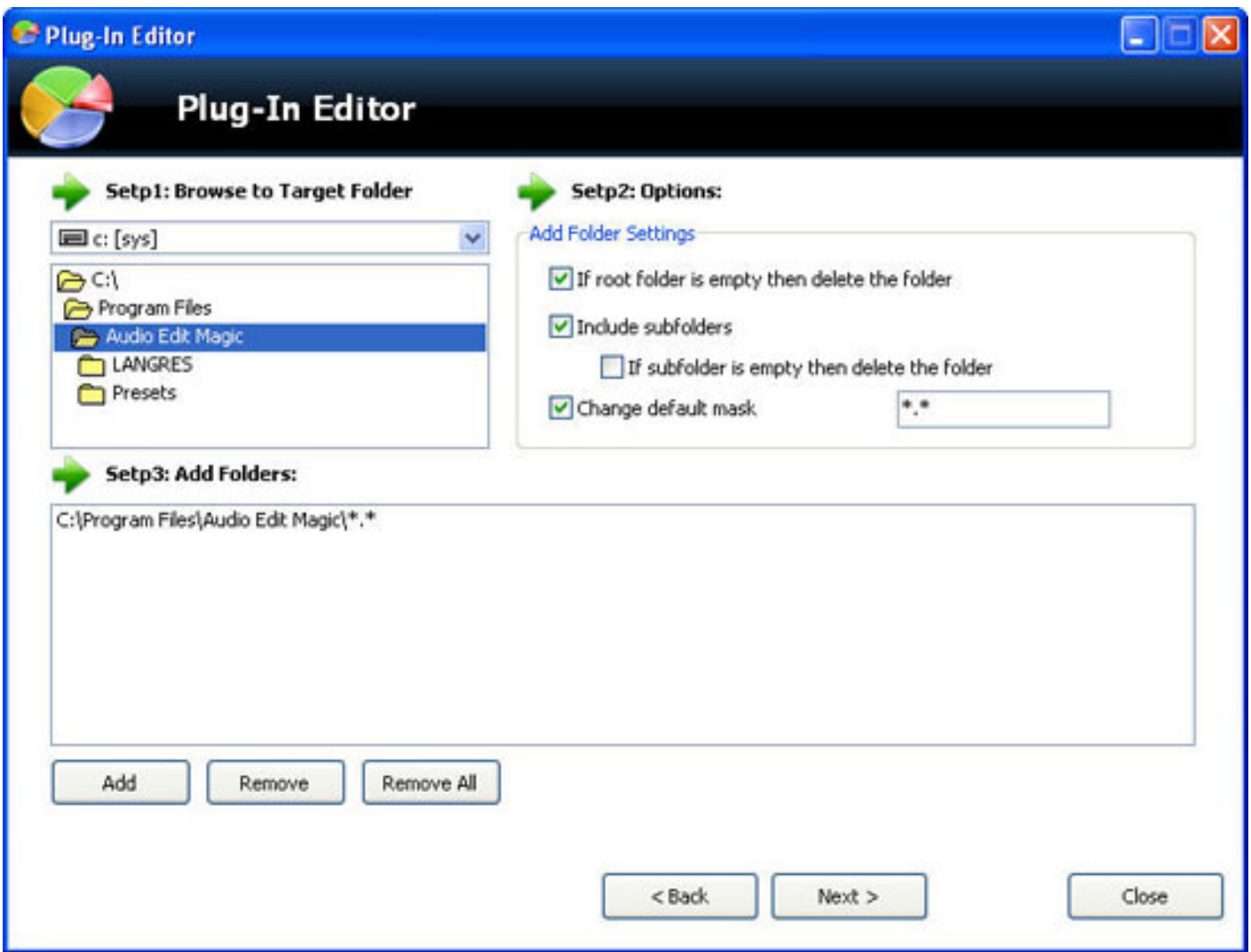
Step3: To delete files, double click a folder (Step 1) and select files to be deleted (Step 2). Selected files will appear in the show window (Step 3). Click "Remove All" to delete selected files.





Step4: To delete a folder, double click the folder (Step 1), select delete options (Step 2) and it will be added in the show window (Step 3). Click the "Remove All" button to delete the selected folder.





Step5: Click "Create" to save your settings and complete the process.



## Plug-In Editor



### Finished!

You have now completed the configuration of your custom wash item. Click the "Create" button to save your configuration and complete the process.

If you would like to change the description of your custom wash item, please do so at this before you click Create button.

### Custom Wash Item Contains:

7Files to Wash

0Folders to Wash

Registry Keys and Values to Wash

< Back

Create

Close

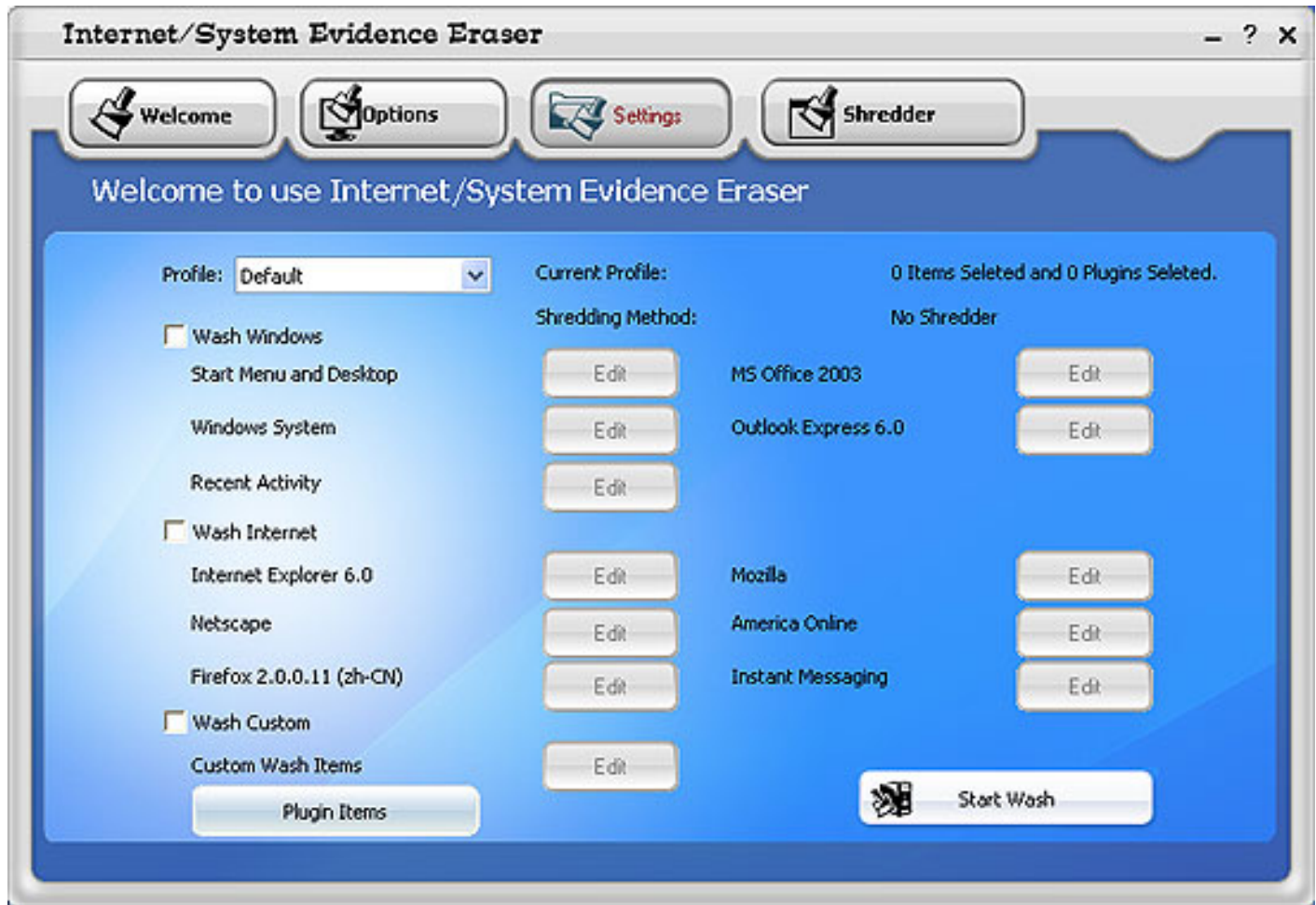
# Internet/System Evidence Eraser

## Configuring Internet/System Evidence Eraser

### Configuring Internet/System Evidence Eraser

Internet/System Evidence Eraser may be configured to reflect your personal preferences.

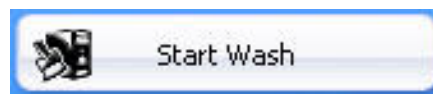
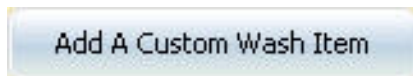
To configure Internet/System Evidence Eraser, click the Settings Tab in the Navigation Panel.



To change the settings simply check the boxes next to a desired preference.

Those options allow you to eliminate the traces in Windows and Internet. Click the specific check box to select options which you'd like to wash.

Or you are able to custom wash items by clicking

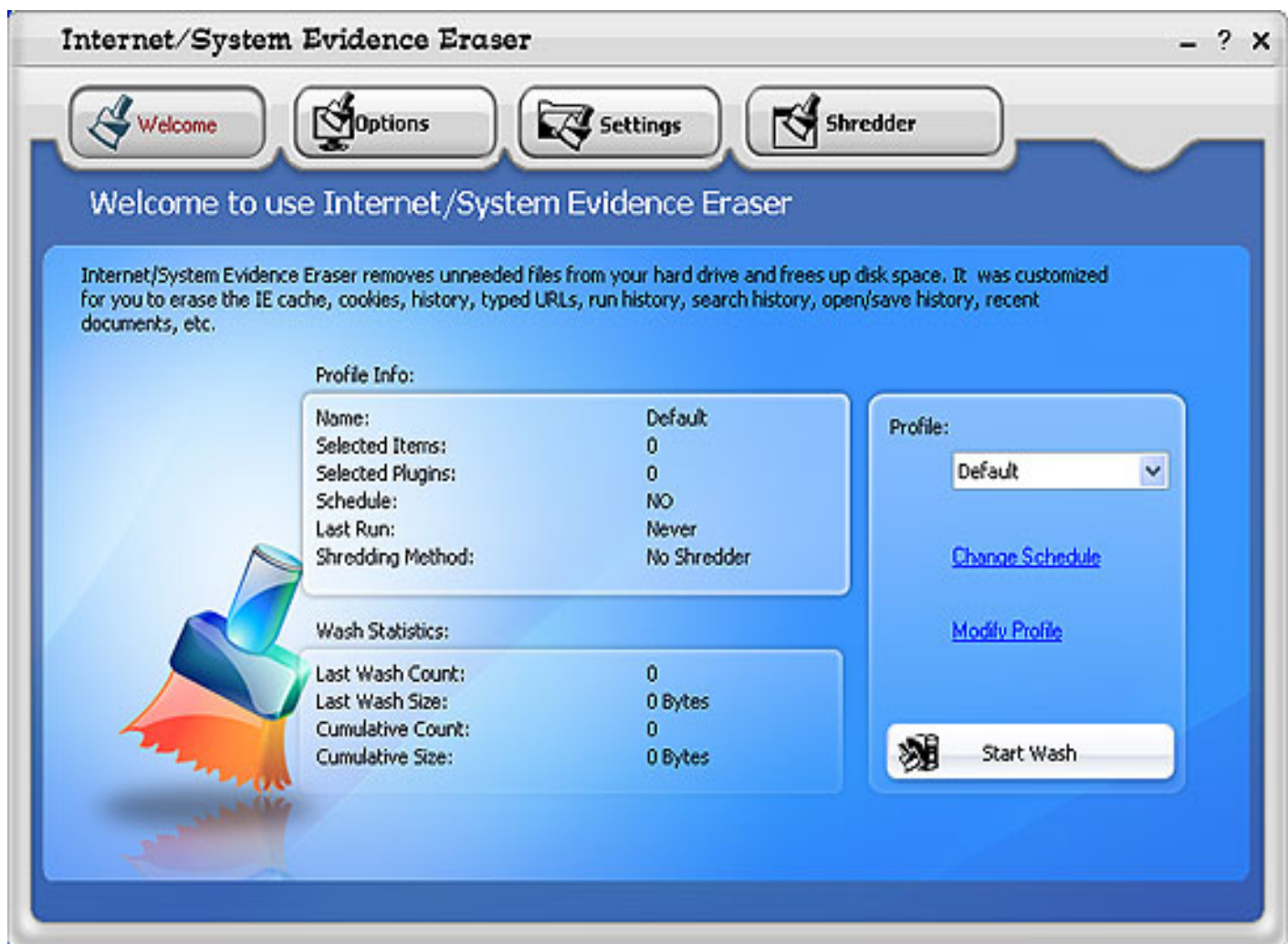


Once the combination of preferences are selected, click on

# Internet/System Evidence Eraser

The user interface (Overview)

## The user interface (Overview)



**Overview:** When Internet/System Evidence Eraser starts, the System Overview appears.

**Navigation Panel:** Includes Welcome, Clear Options, Settings and Shredder tabs. To navigate from one screen to another, just click on those tabs.

**Main Area:** Contains the System Overview or a report showing summary details of:

- Profile Name
- Selected Items
- Selected Plug-Ins
- Shredding Method
- Wash Statistics

**Profile Drop List:** Select Profiles from the drop list.

**Modify Profile:** Guides you to the Clear Option Window.

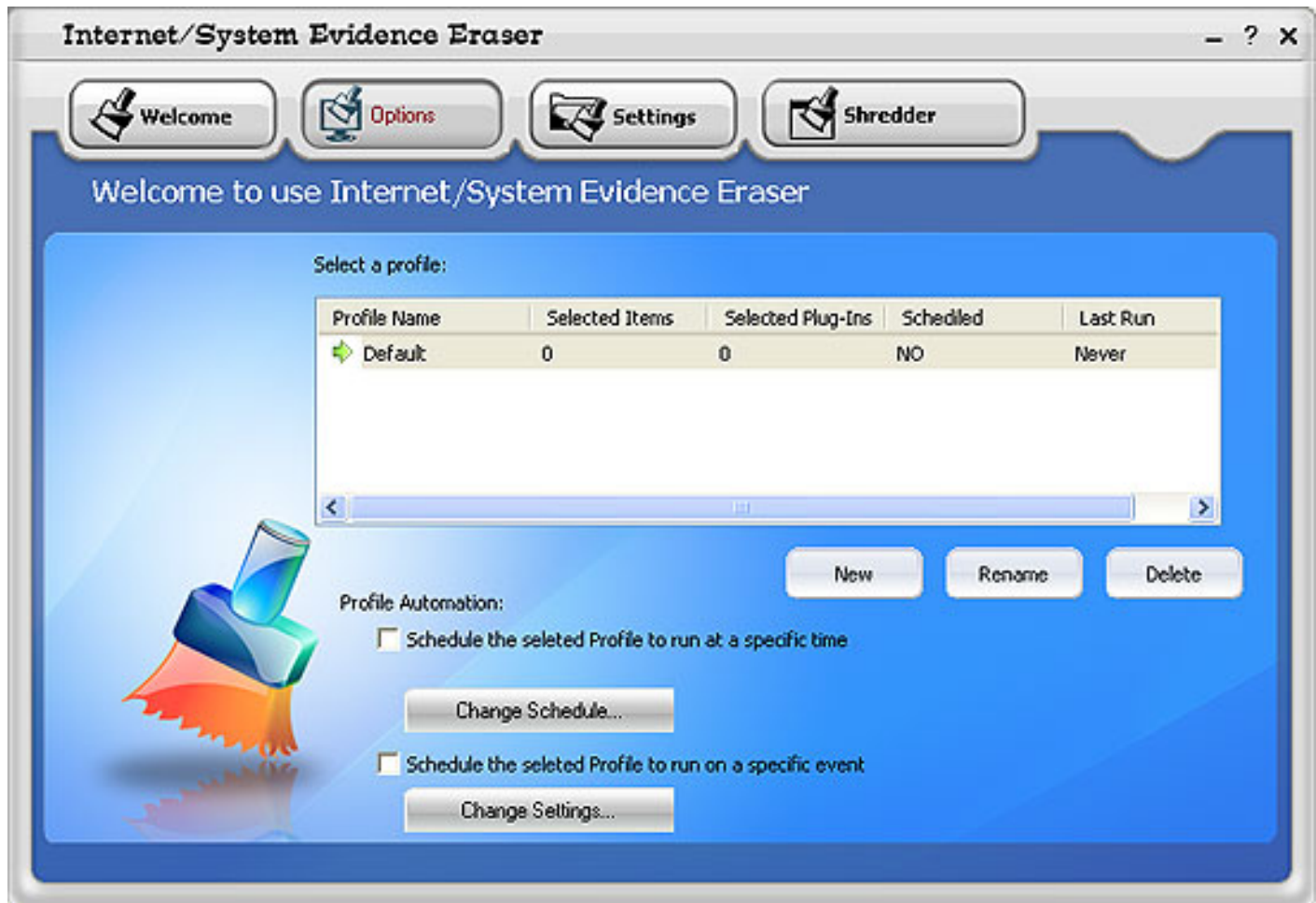
**Change Schedule:** Guides you to the Shredder Window.

# Internet/System Evidence Eraser

## Clear Option

### Clear Option

In the Clear Option tab, add Profiles and set Profile Automation:




Click the "New" , "Rename" and "Delete" button to correspond to its functions for a specific Profile. This Profile will be displayed in the Profile drop list on the Welcome Window.

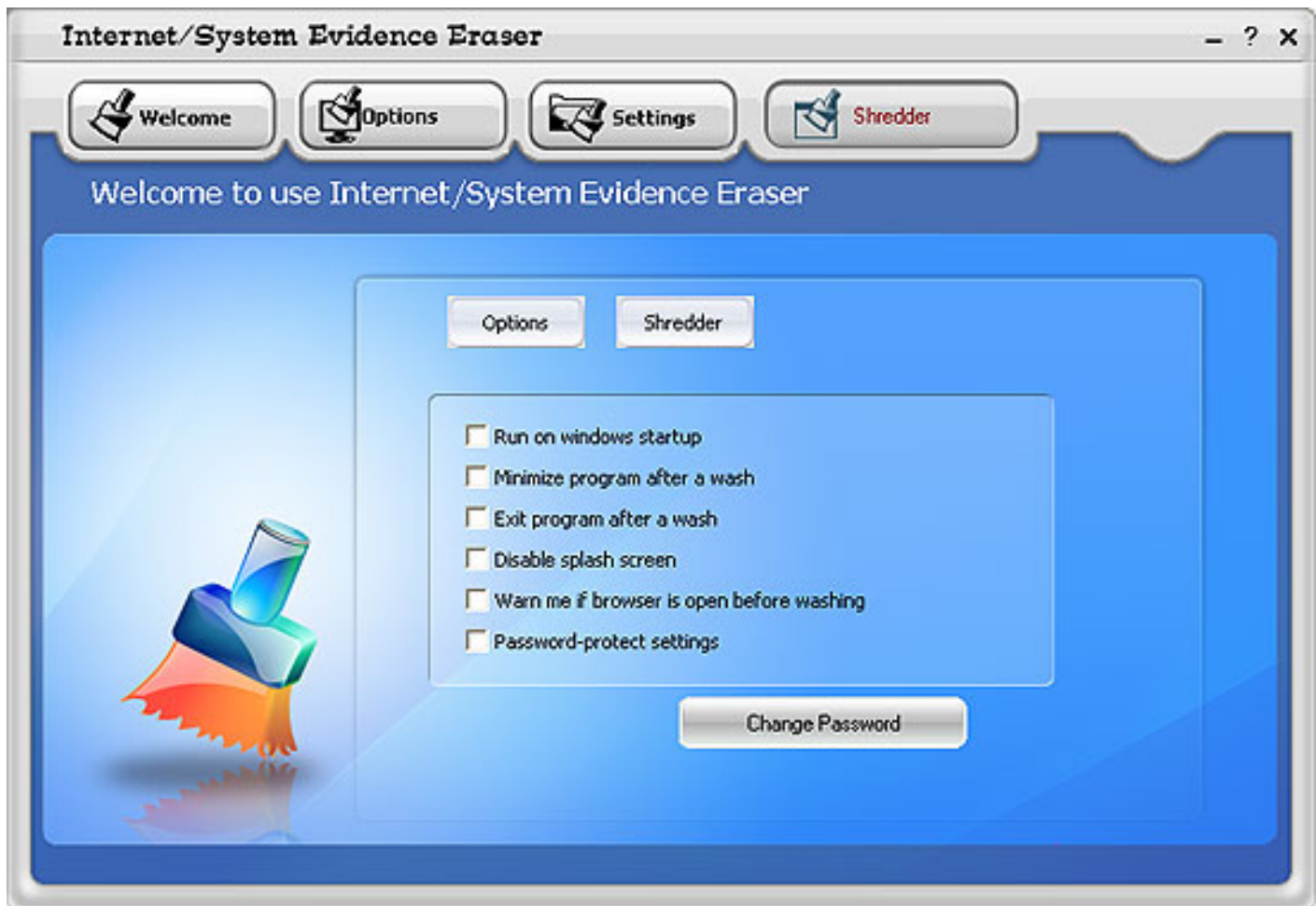
The Profile Automation check box allows you to run Internet/System Evidence Eraser at specific time or on a specific event.



### Shredder



Click  to select shredding preferences. To change the settings, simply check the box next to a desired preference.



### Settings:

Load Window Washer at windows startup: launches Internet/System Evidence Eraser when your system starts up.

Minimize Windows Washer after a wash: launch Internet/System Evidence Eraser to run in the background.

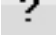
Password-Protect Window Washer settings: check the box to set a password so others can not use this application.



# Internet/System Evidence Eraser

## Question Icon

### Question Icon

The Question Icon  shows other information about Internet/System Evidence Eraser. Click this icon to see the following window:



**Help Content:** Guides you to the help file.

**Quick Start:** Guides you to the "The user interface (Overview)" page in the help file.

**Languages:** select English.

**Register:** Guides you to the registration window.

**Enter Serial Number:** Enter the registration key to replace the trial version with full version.

**Online Resources:** Links to [My Windows Doctor Website](#) .

**Contact Technical Support:** Contact our Support Team.

**About:** Displays information of this software.

# Internet/System Evidence Eraser

About My Windows Doctor

## About My Windows Doctor

### Being a Trusted and Dependable Software Partner of PC users!

Being a shareware developer of Windows Operating System solutions, My Windows Doctor take the lead in this domain. We have professional experience in execute our faith - Think as A Customer. This gives us the idea to create reliable and simple-in-use software products for you.

My Windows Doctor R&D Center creates simple solutions to complicated problems. And sleek, clear interfaces in our accomplishment make everything you need from us being enjoyable.

### Contact Us

#### For Customers

Email:

English: [support@mywindowsdoctor.com](mailto:support@mywindowsdoctor.com)

French: [support\\_fr@mywindowsdoctor.com](mailto:support_fr@mywindowsdoctor.com)

German: [support\\_de@mywindowsdoctor.com](mailto:support_de@mywindowsdoctor.com)

#### Internet/System Evidence Eraser

Product ID: 300159572



We always do our best to answer your question!

#### For Partners

North America:

[sales@mywindowsdoctor.com](mailto:sales@mywindowsdoctor.com)

We benefit together with our partners in a win-win model - the My Windows Doctor Business Model, and we love to talk about our creations with you.



**My Windows Doctor**  
MY WINDOWS DOCTOR

<http://www.mywindowsdoctor.com>

# Internet/System Evidence Eraser

## How to buy Internet/System Evidence Eraser

### How to buy Internet/System Evidence Eraser

As soon as you make your order, our resellers will verify it. Your order will most likely be processed within 1 hour, but in some VERY rare cases it may take resellers more than 24 hours to process your payment.

The registration key will be automatically generated at our server and e-mailed to you immediately after we receive payment confirmation from our e-commerce reseller.

Please do not worry if you haven't received the registration information right away. Delays usually occur due to the high security settings of spam filters used by our clients. Our message may be rejected as a spam message by the mail service you use.

If you haven't got the registration message within several hours, feel free to contact our [Support Team](#) via email.

If you have questions concerning our software, send e-mail to: [support@mywindowsdoctor.com](mailto:support@mywindowsdoctor.com). **We always do our best to help you!**



**Buy Now**

### Why Internet/System Evidence Eraser?

#### Save Time

- a. It is outstanding in **speed**.
- b. The **easy-to-use interface** helps you to catch on to the system quickly.
- c. According to surveys, it saves **20%** time in scanning.

#### Save Money

- a. It is your **one-way ticket** to eliminating the traces on your computer.
- b. **30-day money-back guarantee** if you are not satisfied with it!

#### All in one tool

Ensure all traces of your Internet and computer activities are permanently deleted and unrecoverable on your PC.

#### Easy-to-use

With step-by-step manual, Whether you are an experienced user or a beginner, the software will make the task of optimizing your system a breeze!

### What will you have after purchase?

### **Full version of Internet/System Evidence Eraser**

Fun in unlimited system optimizing.

### **Lifetime license**

Free online upgrades on the main version with Lifetime Upgrade Policy.

### **Customer care**

We are pleased to offer our care to meet your needs. We promise that any customer questions will be replied within 1 business day!

### **Coupons for My Windows Doctor products in Discount Center**

Great discounts for our customers.

## **Is my order secure?**

As we have for years, we promise the most secure purchase.

[ShareIt](#) and [RegNow](#), all these My Windows Doctor partners passed strict certification. We truly believe in 'Only by benefiting our customer can we benefit ourselves'. So your purchase security in My Windows Doctor is our top priority! Windows Supporter has been involved in E-commerce for years. And through these years, we built up a secure online shopping system. You can enjoy the speed and convenience we offer.

### Glossary of Terms

#### **ActiveX**

An ActiveX control is essentially a simple OLE object that supports a variety of interfaces. ActiveX Controls have become the primary architecture for developing programmable software components for use in a variety of different containers, ranging from software development tools to end-user productivity tools. ActiveX controls register themselves in the Windows Registry.

#### **Application**

Applications are programs that are designed for end users such as word processors, spreadsheets, Customer Relationship Management and database software.

#### **Backup**

The procedure that allows you to store your data on a separate storage medium so that you can reproduce the data with 100% accuracy if and when data loss takes place.

#### **COM**

Microsoft defines COM or Component Object Model as "a platform-independent, distributed, object-oriented system for creating binary software components that can interact. COM is the foundation technology for Microsoft's OLE (compound documents), ActiveX® (Internet-enabled components), as well as others".

#### **Custom Controls**

A custom control is subsequently a control that is non-standard to Windows or proprietary to the application that is being installed. An example, in a car racing game, a custom control would be the speedometer. It is not a native Windows control but is required by the application (car racing game).

#### **File Associations**

A file association allows you to control certain aspects of how the Shell's treats different file types.

#### **File Extensions**

In such operating systems as Windows, one or several letters (generally three) at the end of a filename. Filename extensions usually follow a period (dot) and indicate the type of information stored in the file. Common file extensions include pdf, .exe, .gif, .jpg, .tif, .mp3, .avi, .doc, .xls, and .zip.

#### **File System**

A system for organizing directories and files, generally in terms of how it is implemented in the disk operating system.

#### **Objects**

An object is a software bundle of variable items of data (state) and related behaviors implemented through methods. A method is function (subroutine) associated with an object. For example, an event is a common object used in window systems to represent the action of a user pressing a mouse button or a key on the keyboard.

## **Processes**

While the term "program" refers to an executable code (the exe file for MS Word, for example), a process is a program that is being executed. When you start a program in Windows, the executable will be loaded into RAM. Windows will then add the new process to its internal process list and make sure the process receives some CPU time as well as memory and other resources.

## **Restore**

The process of reinstating a set of data to its original state before the data loss or related incident has occurred.

## **Shell**

The Windows user interface gives you access to a wide variety of objects necessary for running applications and managing the operating system. The most numerous and familiar of these objects are the folders and files that reside your hard drive. There are also a number of virtual objects that allow the user to do tasks, such as send files to remote printers or access the Recycle Bin. The Shell organizes these objects into a hierarchical structure and provides users and applications with a consistent and efficient way to access and manage various objects. Users interact with the hierarchy (or namespace) through the Shell's graphical UI or through an application.

## **Shell Namespace**

The Shell namespace organizes the file system and all objects managed by the Shell into a single tree-structured hierarchy. Think of it as a larger and more inclusive version of the file system.

## **Shortcuts**

Special types of files that contain preset links to various single files, folders and devices. Windows has a series of shortcuts placed on the computer desktop to allow access to files and devices at one click of a button.

## **User Interface**

The menu and general instruments available for the user to communicate with the program. In Internet/System Evidence Eraser the user interface is designed to be highly intuitive and exceptionally simple to use.

## **Virtual Devices**

Virtual devices are also referred to as a virtual peripheral - a virtual device mimics a physical hardware device, essentially, "tricking" your system into believing that a device exists when actually it does not. For example, fax software can act as a virtual printer. When want to send a document to your fax modem, you would print it "normally" to the fax/modem (virtual printer) device, which then sends information to another fax / modem or fax machine instead of your printer actually printing the file.